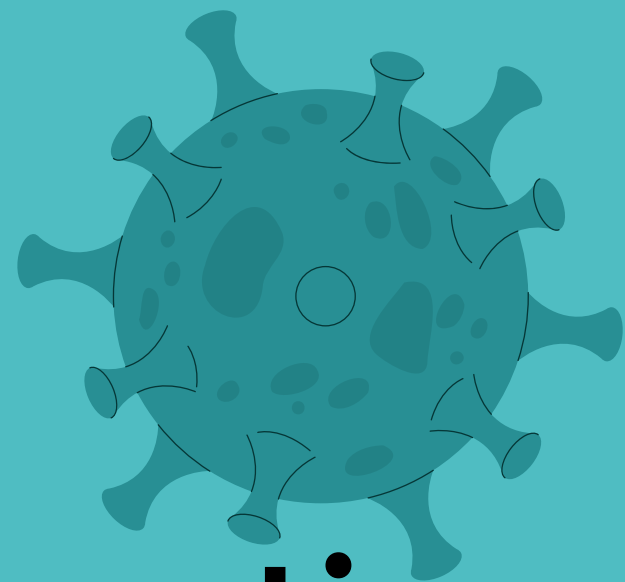


COVID-19 Update
September 2021



Early Years Education

What has changed and what do
you need to know?

UPDATE



Swipe left to read about the updated guidance

COVID-19 Update

September 2021

If your child is returning to an **early years setting**

They should not attend their setting if showing COVID-19 symptoms, and should have a PCR test. **Children experiencing mild fever after routine vaccinations should attend as normal.**

If you are worried about your child's symptoms call the **NHS on 111**

Swipe left to read more about the updated guidance

COVID-19 Update

September 2021

Parents and carers may be allowed in communal areas for **organised activities** e.g. shows. This may depend on the rules set by each individual setting



Swipe left to read more about the updated guidance

COVID-19 Update

September 2021



Although no longer mandatory, some settings may still **request** that you wear **face coverings** in communal areas of the premises.



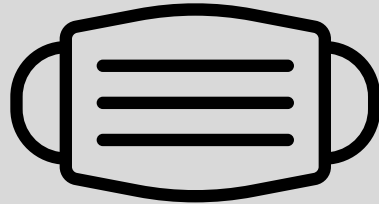
Let's keep our school



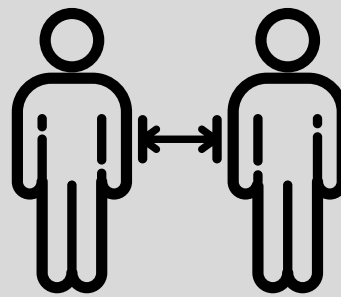
CLEAN, SAFE & GERM-FREE!



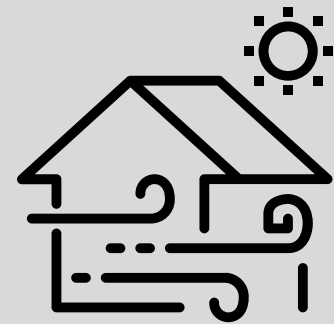
Hands



**Face covering
in crowded
spaces**



Space



Ventilation

**Covid-19 is still
with us**

Student Safety is our Priority!